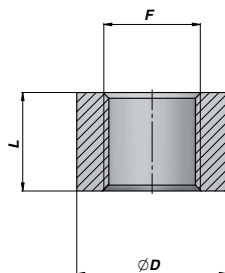


Tilbehør for cylinder • Accessories for cylinder

CBS

Gevindstuds
Threaded port

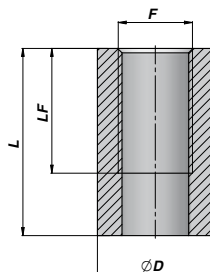


Codice Code Bestell-Nr.	F BSP	L	ØD	kg x100	Codice Code Bestell-Nr.	F	L	ØD	kg x100
CBS0300000	1/8"	14	20	2,80	CBS0001215	M12x1,5	16	22	3,70
CBS0400000	1/4"	16	22	3,50	CBS0001415014	M14x1,5	14	22	2,80
CBS0600000	3/8"	17	26	4,70	CBS0001415	M14x1,5	16	22	3,20
CBS0800000	1/2"	18	30	6,10	CBS0001615	M16x1,5	17	26	4,90
CBS1200000	3/4"	20	38	10,50	CBS0001815014	M18x1,5	14	28	4,40
CBS1600000	1"	25	45	16,90	CBS0001815	M18x1,5	18	28	5,70
CBS2000000	1 1/4"	24,5	55	22,60	CBS0002015	M20x1,5	18	30	6,10
CBS2400000	1 1/2"	30	60	28,90	CBS0002215	M22x1,5	18	30	5,30
CBS3200000	2"	30	70	30,70					

MATERIALE - MATERIAL: ACCIAIO - STEEL - STAHL 9SMn28

CBSP

Høj gevindstuds
High threaded port

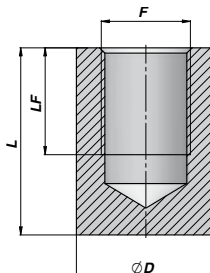


Codice Code Bestell-Nr.	F BSP	LF	L	ØD	kg x100
CBSP040000	1/4"	27	40	22	8,60
CBSP060000	3/8"	28	42	26	11,70
CBSP080000	1/2"	33	48	30	16,30

MATERIALE - MATERIAL: ACCIAIO - STEEL - STAHL 9SMn28

CBSL

Lukket gevindstuds
Blind threaded port



Codice Code Bestell-Nr.	F BSP	LF	L	ØD	kg x100
CBSL040000	1/4"	13	30	22	7,30
CBSL060000	3/8"	20	35	26	10,70
CBSL080000	1/2"	22	35	30	13,80

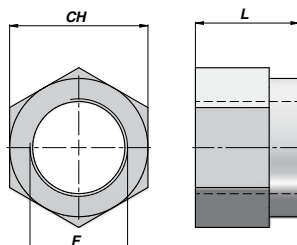
MATERIALE - MATERIAL: ACCIAIO - STEEL - STAHL 9SMn28

Tilbehør for cylinder • Accessories for cylinder

CDA, CDB

Låsemøtrik

Lock nut



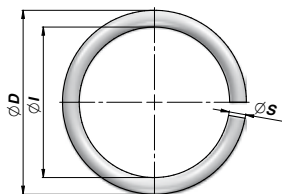
Codice Code Bestell-Nr.	F	L	CH	kg x 100	Codice Code Bestell-Nr.	F	L	CH	kg x 100
CDA0001215	M12x1,5	14	19	2,00	CDB0001415	M14x1,5	14	22	2,60
CDA0001415	M14x1,5	16	22	3,00	CDB0002015	M20x1,5	17	30	6,00
CDA0001815	M18x1,5	20	27	5,16	CDB0002420	M24x2	21	36	10,00
CDA0002015	M20x1,5	22	30	7,00	CDB0002720	M27x2	23	41	13,00
CDA0002215	M22x1,5	25	32	8,60	CDB0003320	M33x2	26	50	25,50
CDA0002420	M24x2	27	36	13,00					
CDA0002720	M27x2	30	41	18,00					
CDA0003020	M30x2	32	46	25,80					
CDA0003320	M33x2	35	50	31,00					
CDA0003930	M39x3	42	60	56,00					
CDA0004830	M48x3	52	75	200,00					

MATERIALE - MATERIAL:
ACCIAIO - STEEL - STAHL UNI 7473 - 7474

CAT

Låsering for plungercylinder

Stop ring for plunger cylinder



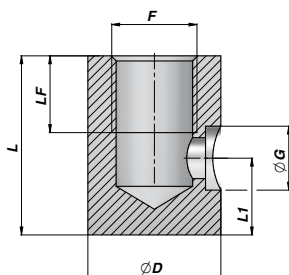
Codice Code Bestell-Nr.	ØD	ØI	ØS	kg x 100
CAT0200025	22	16	3	0,38
CAT0250030	28	22	3	0,40
CAT0280030	31	25	3	0,45
CAT0300030	33	27	3	0,50
CAT0350035	38,5	31,5	3,5	0,80
CAT0400040	44	36	4	1,20
CAT0450040	49	41	4	1,40
CAT0500045	54,5	45,5	4,5	1,90
CAT0550050	59,5	50,5	4,5	2,00
CAT0600055	65,5	54,5	5,5	3,40
CAT0700065	76	64	6	5,00
CAT0800060	86	74	6	5,50
CAT1000060	106	94	6	7,00

MATERIALE - MATERIAL:
ACCIAIO - STEEL - STAHL

Tilbehør for cylinder • Accessories for cylinder

CBSLT

Rørtilslutning
Threaded port for feed pipe

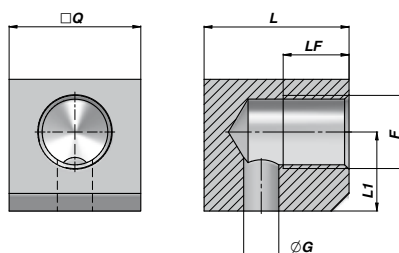


Codice Code Bestell-Nr.	F BSP	LF	L	ØD	ØG	L1	kg x100
CBSLT04010	1/4"	15	30	22	10,5	12	6,90
CBSLT06012	3/8"	15	35	26	12,5	15	10,50
CBSLT08015	1/2"	15†	35	30	15,5	15	13,20

MATERIALE - MATERIAL: ACCIAIO - STEEL - STAHL 9SMn28

CBL

Tilslutningsblok
Oil inlet

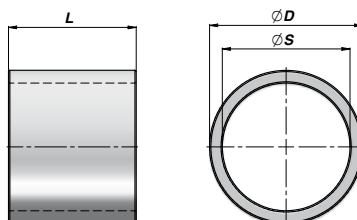


Codice Code Bestell-Nr.	F BSP	LF	L	□Ø	ØG	L1	kg
CBLO400000	1/4"	15	30	25	8	15	0,10
CBLO600000	3/8"	15	33	30	8	18	0,20
CBLO800000	1/2"	18	40	35	12	20	0,30

MATERIALE - MATERIAL: ACCIAIO - STEEL - STAHL S355JO (Fe510C)

CDIS

Afstandsstykke
Spacer



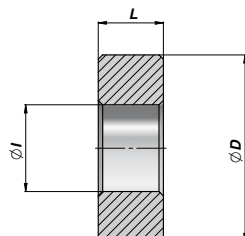
Codice Code Bestell-Nr.	ØS	ØD	L	kg	Codice Code Bestell-Nr.	ØS	ØD	L	kg
CDIS025035050	25	35	50	0,20	CDIS025035100	25	35	100	0,40
CDIS030040050	30	40	50	0,21	CDIS030040100	30	40	100	0,42
CDIS035045050	35	45	50	0,25	CDIS035045100	35	45	100	0,50
CDIS040050050	40	50	50	0,28	CDIS040050100	40	50	100	0,56
CDIS050060050	50	60	50	0,34	CDIS050060100	50	60	100	0,68
CDIS060075050	60	75	50	0,62	CDIS060075100	60	75	100	1,24
CDIS070085050	70	85	50	0,72	CDIS070085100	70	85	100	1,44

MATERIALE - MATERIAL: ACCIAIO - STEEL - STAHL St 52.3 DIN 2393 ISO H9

Tilbehør for cylinder • Accessories for cylinder

CA

Låsring for plungercylinder
Stop ring for plunger cylinder

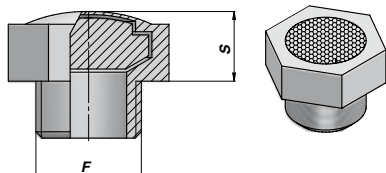


Codice Code Bestell-Nr.	ØD	ØI	L	kg	Confezione Box Verpackung	Pz Pcs Stk
CA03400000	34	15	10	0,08	ZOCCA03400000	250
CA03800000	38	20	15	0,10	ZOBKA03800000	200
CA04300000	43	20	15	0,13	ZOACA04300000	150
CA04800000	48	20	20	0,23	ZOCCA04800000	100
CA05300000	53	27	20	0,26	ZOCCA05300000	100
CA05800000	58	27	20	0,32	Z50CA05800000	50
CA06800000	68	27	20	0,48	Z50CA06800000	50

MATERIALE - MATERIAL:
ACCIAIO - STEEL - STAHL S355J0 (Fe510C)

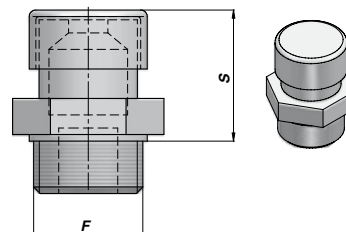
ASEP

Udluftningsskrue
Ventilation cap



ATS

Udluftningsskrue
Ventilation cap



Codice Code Bestell-Nr.	F BSP	S	kg x 100
ASEP030000	1/8"	7	1,00
ASEP040000	1/4"	8	1,20
ASEP060000	3/8"	9	2,00
ASEP080000	1/2"	9	2,30
ASEP120000	3/4"	11	4,00
ASEP160000	1"	12	6,00

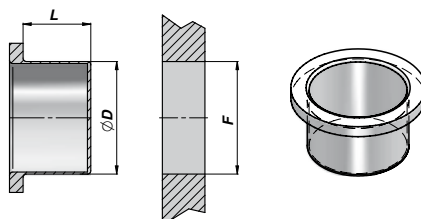
Codice Code Bestell-Nr.	F BSP	S	kg x 100
ATS31A0030	1/8"	15	3,00
ATS31A0040	1/4"	20	4,00
ATS31A0060	3/8"	19	4,50
ATS31A0080	1/2"	19	6,00
ATS31A0120	3/4"	23	15,00
ATS31A0160	1"	30	24,00

MATERIALE - MATERIAL:
OTTONE+BRONZO SINTERIZZATO - BRASS+SINTERED BRONZE - MESSING+SINTERBRONZE

Tilbehør for cylinder • Accessories for cylinder

APG, APM

Prop
Plug



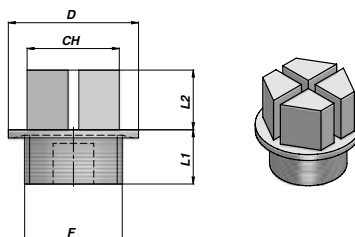
Codice Code Bestell-Nr.	F BSP	ØD	L
APG0300000	1/8"	9,0	7,5
APG0400000	1/4"	12,0	9,0
APG0600000	3/8"	15,5	9,5
APG0800000	1/2"	19,0	10,5
APG1200000	3/4"	25,0	12,0
APG1600000	1"	31,0	10,5
APG2000000	1 1/4"	39,5	11,0
APG2400000	1 1/2"	46,0	10,5
APG3200000	2"	57,5	13,5

Codice Code Bestell-Nr.	F	ØD	L
APM1215000	M12x1,5	10,5	8,0
APM1415000	M14x1,5	13,0	9,5
APM1615000	M16x1,5	15,0	9,5
APM1815000	M18x1,5	17,0	10,5
APM2015000	M20x1,5	19,0	10,5
APM2215000	M22x1,5	21,0	11,0

MATERIALE - MATERIAL:
POLIETILENE L.D. - POLYETHYLENE L.D. - POLYÄTHYLEN L.D.

APSEP

Prop med gevind
Threaded plug



Codice Code Bestell-Nr.	F BSP	D	L1	L2	CH
APSEP43516	1/8"	16,8	9	10	13
APSEP43519	1/4"	19,2	9	10	13
APSEP43522	3/8"	22,2	9	11	17
APSEP43527	1/2"	27,2	12	13	19
APSEP43532	3/4"	32,3	12	13	24
APSEP43540	1"	40,0	15	14	27
APSEP43550	1 1/4"	50,4	15	15	36
APSEP43555	1 1/2"	55,4	15	15	41
APSEP43568	2"	68,4	15	15	55

Codice Code Bestell-Nr.	F	D	L1	L2	CH
APSEP435M12	M12x1,5	17,2	10	10	13
APSEP435M14	M14x1,5	19,2	10	10	13
APSEP435M16	M16x1,5	22,0	10	10	17
APSEP435M18	M18x1,5	24,0	10	11	17
APSEP435M20	M20x1,5	26,0	10	14	19
APSEP435M22	M22x1,5	27,2	10	14	19

MATERIALE - MATERIAL:
POLIAMIDE PA 6 - POLYAMIDE PA 6 - POLYAMID PA 6