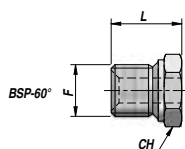




## Nipler og forskruninger • Adapters

### RV501

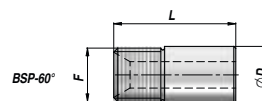
BSP svejsenippel  
BSP weldable male



Codice Code Bestell-Nr.	F BSP	CH	L	kg x 100
RV501.0400	1/4"	19	18~	2,00
RV501.0600	3/8"	22	20~	3,60
RV501.0800	1/2"	27	23~	5,00
RV501.1200	3/4"	32	26~	7,60
RV501.1600	1"	41	30~	15,40
RV501.2000	1"1/4	50	32~	26,60

### RV511

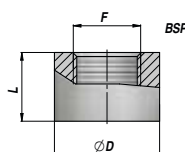
BSP gevindrør til påsvejsning  
BSP weldable male



Codice Code Bestell-Nr.	F BSP	ØD	L	kg x 100
RV511.0400	1/4"	15	25~	2,00
RV511.0600	3/8"	17	35~	3,80
RV511.0800	1/2"	21	35~	5,60
RV511.1200	3/4"	28	41~	9,40
RV511.1600	1"	35	41~	15,20
RV511.2000	1"1/4	43	45~	26,30

### CBS

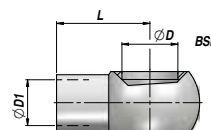
BSP svejsemuffe  
BSP weldable threaded port



Codice Code Bestell-Nr.	F BSP	L	ØD	kg x 100
CBS0300000	1/8"	14	20	2,80
CBS0400000	1/4"	16	22	3,55
CBS0600000	3/8"	17	26	4,70
CBS0800000	1/2"	18	30	6,10
CBS1200000	3/4"	20	38	10,50
CBS1600000	1"	25	45	16,90
CBS2000000	1"1/4	24,5	55	22,60
CBS2400000	1"1/2	30	60	28,90
CBS3200000	2"	30	70	30,70

### RV531

BSP svejsebanjo  
BSP weldable banjo

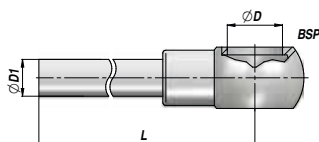


Codice Code Bestell-Nr.	ØD BSP	ØD1	L	kg x 100
RV531.0400	1/4"	10	24~	2,20
RV531.0610	3/8"	10	28~	4,20
RV531.0600	3/8"	12	28~	3,40
RV531.0800	1/2"	15	32~	7,60
RV531.0814	1/2"	14	32~	6,80
RV531.1200	3/4"	20	40~	17,60
RV531.1600	1"	25	57~	33,20

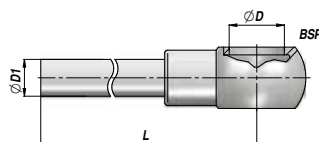
## Nipler og forskruninger • Adapters

### RV535

BSP banjo med rør  
BSP banjo with pipe



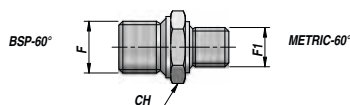
Codice Code Bestell-Nr.	ØD BSP	ØD1	L	kg x 100
RV535.0410	1/4"	10	100~	5,50
RV535.0415	1/4"	10	150~	7,00
RV535.0420	1/4"	10	200~	8,50
RV535.0430	1/4"	10	300~	11,50
RV535.0440	1/4"	10	400~	14,50
RV535.0460	1/4"	10	600~	20,50
RV535.0485	1/4"	10	850~	28,00
RV535.0499	1/4"	10	1000~	34,50
RV535.120404	1/4"	12	40~	3,60
RV535.120420	1/4"	12	200~	10,70
RV535.120440	1/4"	12	400~	18,50
RV535.0603	3/8"	12	40~	4,50
RV535.0606	3/8"	12	60~	5,50



Codice Code Bestell-Nr.	ØD BSP	ØD1	L	kg x 100
RV535.0610	3/8"	12	100~	7,00
RV535.0615	3/8"	12	150~	8,50
RV535.0620	3/8"	12	200~	11,00
RV535.0630	3/8"	12	300~	14,50
RV535.0640	3/8"	12	400~	18,50
RV535.0650	3/8"	12	500~	22,50
RV535.0660	3/8"	12	600~	27,00
RV535.0699	3/8"	12	1000~	42,50
RV535.0810	1/2"	15	100~	11,50
RV535.0820	1/2"	15	200~	16,50
RV535.0830	1/2"	15	300~	20,50
RV535.0840	1/2"	15	400~	26,50
RV535.0850	1/2"	15	500~	32,50

### RV302

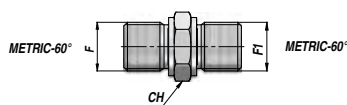
BSP/metrisk overgangsniappel  
Male reduction adapter BSP/metric



Codice Code Bestell-Nr.	F BSP	F1	CH	kg x 100
RV302.0414	1/4"	M14x1,5	19	3,00
RV302.0418	1/4"	M18x1,5	24	4,80
RV302.0614	3/8"	M14x1,5	22	4,00
RV302.0616	3/8"	M16x1,5	22	4,20
RV302.0618	3/8"	M18x1,5	24	5,40
RV302.0622	3/8"	M22x1,5	27	6,80
RV302.0818	1/2"	M18x1,5	27	6,80
RV302.0822	1/2"	M22x1,5	27	7,60

### RV002

Metrisk brystniappel  
Metric straight male adapter

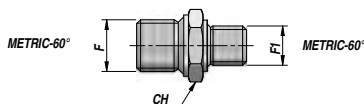


Codice Code Bestell-Nr.	F	F1	CH	kg x 100
RV002.1415	M14x1,5	M14x1,5	19	3,20
RV002.1615	M16x1,5	M16x1,5	22	4,00
RV002.1815	M18x1,5	M18x1,5	24	5,40
RV002.2215	M22x1,5	M22x1,5	27	7,60

## Nipler og forskruninger • Adapters

### RV303

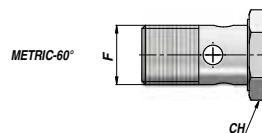
Metrisk overgangsnippel  
Metric straight male reducing adapter



Codice Code Bestell-Nr.	F	F1	CH	kg x 100
RV303.1614	M16x1,5	M14x1,5	22	3,60
RV303.1814	M18x1,5	M14x1,5	24	4,80
RV303.1816	M18x1,5	M16x1,5	24	5,20
RV303.2218	M22x1,5	M18x1,5	27	7,00

### RV432

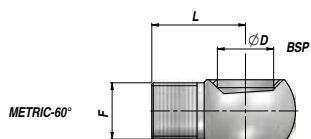
Metrisk banjo  
Metric banjo



Codice Code Bestell-Nr.	F	CH	kg x 100
RV432.1415	M14x1,5	19	3,40
RV432.1615	M16x1,5	22	4,40
RV432.1815	M18x1,5	24	6,60
RV432.2215	M22x1,5	27	10,40

### RV453

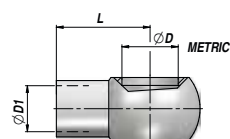
Banjo med metrisk gevind  
Metric threaded banjo



Codice Code Bestell-Nr.	ØD	F	L	kg x 100
RV453.1414	14	M14x1,5	25~	3,00
RV453.1616	16	M16x1,5	28~	4,20
RV453.1818	18	M18x1,5	30~	6,00
RV453.2222	22	M22x1,5	32~	6,40

### RV532

Metrisk svejsebanjo  
Weldable metric banjo



Codice Code Bestell-Nr.	ØD	ØD1	L	kg x 100
RV532.1410	14	10	24~	2,20
RV532.1612	16	12	28~	3,80
RV532.1815	18	15	29~	5,60
RV532.2218	22	18	32~	6,00