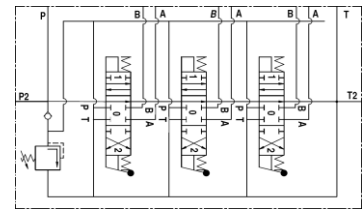
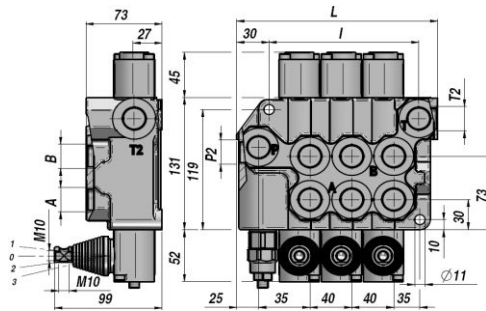


**MANØVRE VENTILER - MONOBLOCK VALVES**

**BM 100**

**Qn Q MAX**  
**90 l/min 100 l/min**

**MANØVRE VENTIL  
 MONOBLOCK VALVE**



Varenr. Code	Type	N° sektioner Sections No.	Gevind - Threads					PN bar	P MAX U bar	P MAX S bar	L	I	kg
			A-B BSP	P BSP	T BSP	P2 BSP	T2 BSP						
DBM5111001	BM100/1/GU/MO A1	1									115	66	4,70
DBM5211001	BM100/2/GU/MO A1 x 2	2	3/4"	3/4"	3/4"	3/4"	3/4"	250	320	80	155	106	7,20
DBM5311001	BM100/3/GU/MO A1 x 3	3									195	146	9,50

PN = Max. arbejdsdruk - Nominal pressure

P MAX U = Max. spidsbelastning - Max. pressure on ports

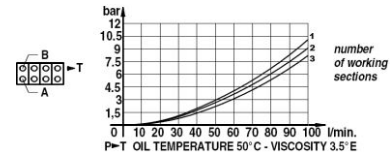
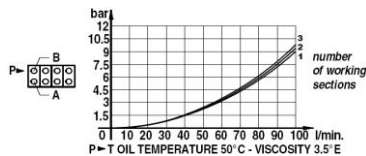
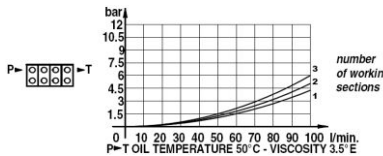
P MAX S = Max. returtryk - Max. pressure in tank-line

Overtryksventil - Relief Valve: X=30:90bar (70) - U=80:230bar (140) (Standard) - K=150:300bar (200)

OVENSTÅENDE VARENUMRE BESTÅR AF - THESE CODES REFER TO:

DOBBELTVIRKENDE - 3 POSITIONER - FJEDER RETUR - A/B PORTE LUKKET - BSP GEVIND - FORBEREDT FOR TRYKVIDEREFØRING

DOUBLE ACTING TYPE - 3 POSITIONS - SPRING RETURN - A/B PORTS CLOSED - BSP THREADS - MACHINED FOR CARRY-OVER



SPOLE TYPE SPOOL TYPE	
A	
B	
C	
D	
L	
Z	

POSITIONER SPOOL CONTROL	
1	
2	
3	
6	
7	
8	
12	
42	

PÅ FORESPØRGSEL ON REQUEST	
MC	manual operator with cam
DO	cam operator
JS	joystick
1P	luftstyret pneumatic operator
HO	hydraulisk styret hydraulic operator
MSW	microswitch
CO	Trykvidereføring power beyond ( carry over )
CCP	Prop for lukket center closed center plug