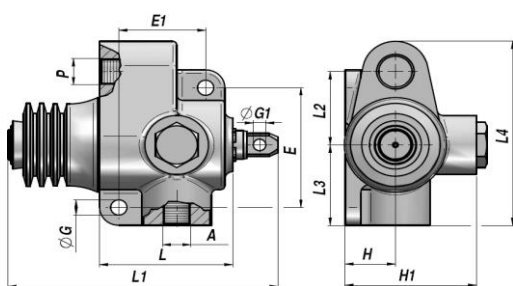
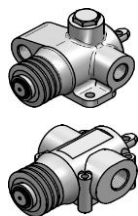
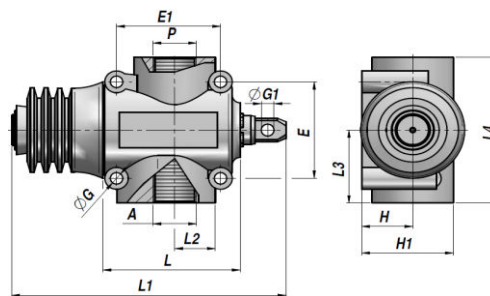


FCR-1T NA

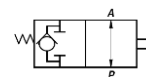
(TIPSTOP VENTIL) ENDESTOP VENTIL - NORMALT ÅBEN
END-STROKE VALVE - NORMALLY OPEN



FCR-1T 3/8" - 1/2"



FCR-1T 3/4"



Varenr. Code	A-P BSP	Q MAX l/min	P MAX bar	Type	L	L1	L2	L3	L4	ØG	ØG1	E	E1	H	H1	kg
V7090.0824	3/8"	60	350	FCR-1T 60-NA 38	69	130	41	45	103	8,5	6.5	66	45	26	68	1,63
V7090.0826	1/2"	80	350	FCR-1T 80-NA 12	69	130	41	45	103	8.5	6.5	66	45	26	68	1,62
V08250M	3/4"	120	350	FCR-1T120-NA 34	88	173	23.5	46	92	8,5	13	50	56	27.5	50	2,11

RØRMONTERING
LINE MOUNTING

MATERIALE - MATERIAL : STØBEJERN - CAST IRON