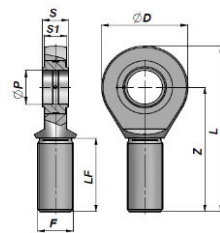
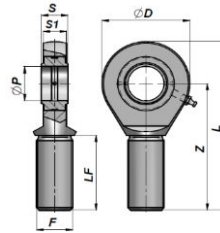


LEDLEJE MED UDV. GEVIND
BALL-JOINT END WITH GREASE NIPPLE

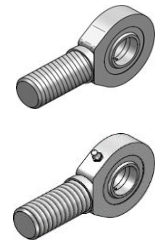
GAR..DO



GAR 6-20 DO/DO2RS



GAR 25-80 DO/DO2RS



| Varenr. Code Type DO | Varenr. Code Type DO...2RS | ØP | Z | S | ØD | S1 | L | F | LF | FC (kN) | kg |
|----------------------------|----------------------------------|----|-----|----|-----|-----|-------|----------|-----|--------------|-------|
| *GAR06DO | | 6 | 36 | 6 | 21 | 4.3 | 46.5 | M6x1 | 18 | 3,4 | 0,01 |
| *GAR08DO | | 8 | 42 | 8 | 24 | 6 | 54 | M8x1.25 | 22 | 5,5 | 0,03 |
| *GAR10DO | | 10 | 48 | 9 | 29 | 7 | 62.5 | M10x1.5 | 27 | 8,1 | 0,05 |
| *GAR12DO | | 12 | 54 | 10 | 34 | 8 | 71 | M12x1.75 | 30 | 10,8 | 0,08 |
| **GAR15DO | | 15 | 63 | 12 | 40 | 10 | 83 | M14x2 | 34 | 17 | 0,14 |
| **GAR17DO | **GAR17D2 | 17 | 69 | 14 | 46 | 11 | 92 | M16x2 | 36 | 21,2 | 0,19 |
| **GAR20DO | **GAR20D2 | 20 | 78 | 16 | 53 | 13 | 104,5 | M20x1.5 | 43 | 30 | 0,31 |
| GAR25DO | GAR25D2 | 25 | 94 | 20 | 64 | 17 | 126 | M24x2 | 53 | 48 | 0,56 |
| GAR30DO | GAR30D2 | 30 | 110 | 22 | 73 | 19 | 146,5 | M30x2 | 65 | 62 | 0,89 |
| GAR35DO | GAR35D2 | 35 | 140 | 25 | 82 | 21 | 181 | M36x3 | 82 | 80 | 1,40 |
| GAR40DO | GAR40D2 | 40 | 150 | 28 | 92 | 23 | 196 | M39x3 | 86 | 100 | 1,80 |
| GAR45DO | GAR45D2 | 45 | 163 | 32 | 102 | 27 | 218 | M42x3 | 94 | 127 | 2,60 |
| GAR50DO | GAR50D2 | 50 | 185 | 35 | 112 | 30 | 241 | M45x3 | 106 | 156 | 3,40 |
| GAR60DO | GAR60D2 | 60 | 210 | 44 | 135 | 38 | 277,5 | M52x3 | 115 | 245 | 5,90 |
| GAR70DO | GAR70D2 | 70 | 235 | 49 | 160 | 42 | 315 | M56x4 | 125 | 315 | 8,20 |
| GAR80DO | GAR80D2 | 80 | 270 | 55 | 180 | 47 | 360 | M64x4 | 140 | 400 | 13.10 |

FC = MAX DYNAMIC LOAD (kN)

* = UDEN SMØRENIPPEL - WITHOUT GREASE NIPPLE

** = SMØREHUL I HOVEDET - LUBRICATING HOLE IN THE HEAD

MATERIALE : STÅL ISO 12240-4 SERIE M

MATERIAL : STEEL ISO 12240-4 SERIES M