

HYDRAULIKMOTORER - HYDRAULIC MOTORS

MPT (MT)



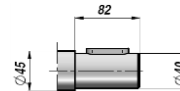
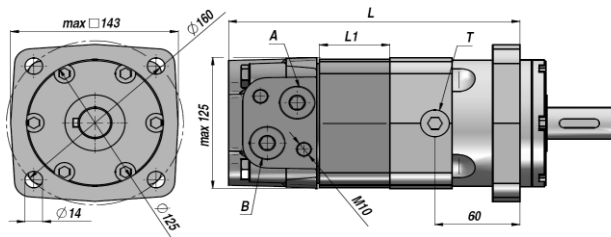
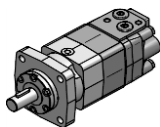
LIGE AKSEL Ø40
PARALLEL SHAFT Ø40

FIRKANTET FLANGE - 4 HULLER
SQUARE FLANGE - 4 HOLES

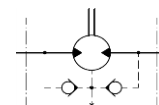
MOTOR "M+S HYDRAULIC"
"M+S HYDRAULIC" MOTOR

Standard: SIDE PORTE - SIDE PORTS

BUILT-IN CHECK VALVES



C



KLARGJORT FOR DRÆN
MACHINED FOR DRAIN CONNECTION

Varenr. Code	Type	cm ³ /omg cm ³ /rev	n. Max omdr./min rpm	M Max daNm	Q Max l/min	P MAX bar			A - B	T	L	L1	kg
						Fald-Drop Dp	Indgang Inlet	Retur Return					
UAFBRUDT DRIFT - CONTINUOUS WORK													
MPT160NC40	MPT 160 C	161,1	622	47	100	200	210	140 *	3/4"	1/4"	190	16,5	20.00
MPT200NC40	MPT 200 C	201,4	620	59	125	200	210	140 *			195	21,5	20.50
MPT250NC40	MPT 250 C	251,8	496	73	125	200	210	140 *			201	27,8	21.00
MPT315NC40	MPT 315 C	326,3	382	95	125	200	210	140 *			211	37.0	22.00
MPT400NC40	MPT 400 C	410,9	304	108	125	180	210	140 *			221	47,5	23.00
MPT500NC40	MPT 500 C	523,6	238	122	125	160	210	140 *			235	61,5	24.00
MPT630NC40	MPT 630 C	631,2	197	130	125	140	210	140 *			231	57,5	24.00
MPT725NC40	MPT 725 C	724,3	172	127	125	120	210	140 *	240	66,5	24.50		

* = MED DRÆN - WITH DRAIN

OPTION	OPTION	OPTION	MAX. RETURTRYK UDEN DRÆN MAX. RETURN PRESSURE WITHOUT DRAIN
<p>CO</p>	<p>W: (Wheel Mount)</p>	<p>E: BAGPORTE REAR PORTS</p>	
<p>K</p>			
<p>SH</p>			
<p>SL</p>			
VERSIONI SPECIALI - SPECIAL VERSIONS			MAX. TILLADT AKSEL BELASTNING PERMISSIBLE SHAFT LOADS
<p>W: hjul monteret - wheel mount</p> <p>S / V: korte versioner - short versions</p> <p>M: forstærket version - reinforced version</p>		<p>Albero - Shaft - Welle : "C-CO-K-SH-SL"</p> <p>Prad = Carico radiale-Radial load-Radiale Belastung Pa = Carico assiale-Axial load-Axiale Belastung</p> <p>Pa max = 1000 daN</p>	