

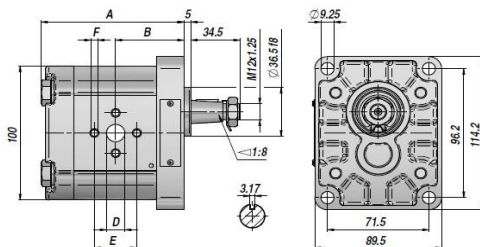
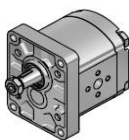
**PS2-A**

**TANDHJUL PUMPE  
GEAR PUMP**

**GR.2**

**STANDARD EU  $\varnothing 36,5$  FLANGE  
STANDARD EUROPEAN  $\varnothing 36,5$  FLANGE**

**KONISK AKSEL 1:8  
1:8 TAPER SHAFT**



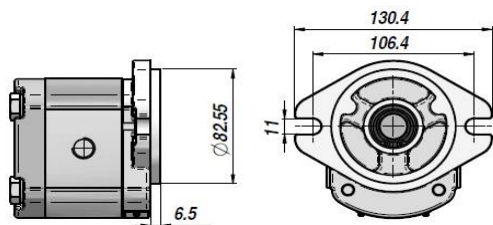
Varenr. Code	Type	cm <sup>3</sup> /omg. cm <sup>3</sup> /rev	P MAX bar		omdr./min rpm		A	B	IN D x E x F	OUT D x E x F	kg
			P1	P3	MAX	MIN					
PG29004*0011000	PS2-A 04 S/D 10N	4.00	250	290	4000	500	93.00	44.40	$\varnothing 13 \times 30 \times M6$	$\varnothing 13 \times 30 \times M6$	2.30
PG29006*0011000	PS2-A 06 S/D 10N	6.00	250	290	4000	500	96.30	46.00	$\varnothing 13 \times 30 \times M6$	$\varnothing 13 \times 30 \times M6$	2.45
PG29008*0011000	PS2-A 08 S/D 10N	8.50	250	290	3500	500	100.50	48.10	$\varnothing 13 \times 30 \times M6$	$\varnothing 13 \times 30 \times M6$	2.60
PG29011*0011000	PS2-A 11 S/D 10N	11.00	250	290	3500	500	104.60	50.20	$\varnothing 19 \times 40 \times M8$	$\varnothing 13 \times 30 \times M6$	2.70
PG29014*0011000	PS2-A 14 S/D 10N	14.00	250	290	3500	500	109.60	52.70	$\varnothing 19 \times 40 \times M8$	$\varnothing 13 \times 30 \times M6$	2.80
PG29016*0011000	PS2-A 16 S/D 10N	16.50	230	250	3500	500	113.80	54.80	$\varnothing 19 \times 40 \times M8$	$\varnothing 13 \times 30 \times M6$	2.95
PG29019*0011000	PS2-A 19 S/D 10N	19.50	210	230	3300	500	118.80	57.30	$\varnothing 19 \times 40 \times M8$	$\varnothing 13 \times 30 \times M6$	3.10
PG29022*0011000	PS2-A 22 S/D 10N	22.50	190	210	2800	500	123.80	59.80	$\varnothing 19 \times 40 \times M8$	$\varnothing 13 \times 30 \times M6$	3.25
PG29026*0011000	PS2-A 26 S/D 10N	26.00	170	190	2500	500	129.60	62.70	$\varnothing 19 \times 40 \times M8$	$\varnothing 13 \times 30 \times M6$	3.40

\* 1= ANTICLOCKWISE  
\* 0= CLOCKWISE

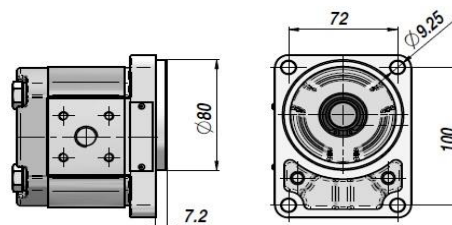
P1 = MAX. ARBEJDSTRYK - MAX. WORKING PRESSURE  
P3 = MAX. BELASTNING - MAX. PEAK PRESSURE

**FLANGER - AVAILABLE FLANGES**

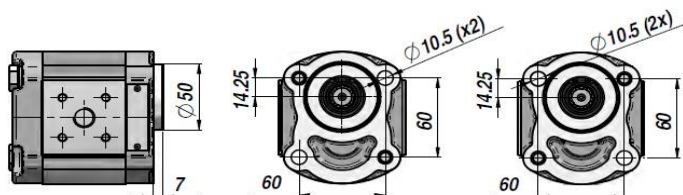
SAE-A



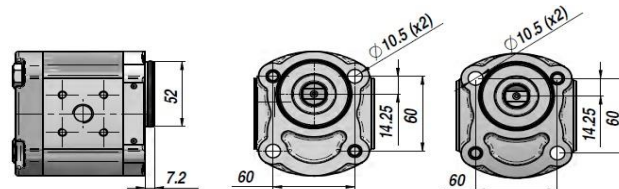
MC 32



E 32 BX



E 32 CX



AKSLER - AVAILABLE SHAFTS

EURO	SAE-A	B80C	B50 (CX-CY)	E52 (CX-CY)
10 	10 	10 	10 	17 
11 	11 	11 	11 	
12 	12 	12 	12 	
13 	13 	13 	13 	
14  Splined profile SAE A 9T - 16/32 DP	14  Splined profile SAE A 9T - 16/32 DP	14  Splined profile SAE A 9T - 16/32 DP	14  Splined profile SAE A 9T - 16/32 DP	
15  Splined profile B 17x14 DIN 5482 n° of teeth =9	15  Splined profile B 17x14 DIN 5482 n° of teeth =9	15  Splined profile B 17x14 DIN 5482 n° of teeth =9	15  Splined profile B 17x14 DIN 5482 n° of teeth =9	
16  Splined profile B 17x14 DIN 5482 n° of teeth =9	16  Splined profile B 17x14 DIN 5482 n° of teeth =9	16  Splined profile B 17x14 DIN 5482 n° of teeth =9	16  Splined profile B 17x14 DIN 5482 n° of teeth =9	

TILSLUTNINGER - CONNECTIONS

N (EURO)	G (GAS)	T (BOSCH)	U (UNF)	F (SAE)
<p>Suction Delivery</p>	<p>Suction Delivery</p>	<p>Suction Delivery</p>	<p>Suction Delivery</p>	<p>Suction Delivery</p>
<p>Dimensions : see table on the left</p>	<p>C = 1/2" (cm<sup>3</sup> 4 ÷ 8) C = 3/4" (cm<sup>3</sup> 11 ÷ 26)</p>		<p>C = 7/8" - 14UNF (cm<sup>3</sup> 4 ÷ 8) C = 1" 1/16 - 12UN (cm<sup>3</sup> 11 ÷ 26)</p>	<p>C = 20 - D = 38 - E = 17.4 (cm<sup>3</sup> 4 ÷ 11) C = 26 - D = 22.4 - E = 47.6 (cm<sup>3</sup> 14 ÷ 26)</p>