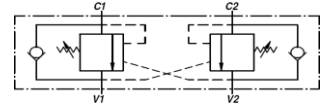
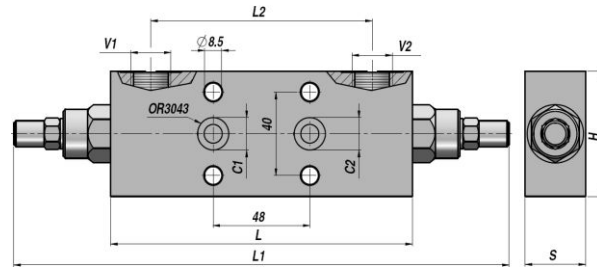


VENTILER - MOTION CONTROL VALVES

VBCD/FL DE

DOBBELT VIRKENDE
DOUBLE ACTING

OVERCENTER VENTIL
OVERCENTER VALVE



Varenr. Code	V1-V2 BSP	C1-C2	Q MAX l/min	P MAX bar	PILOT RATIO	Type	L	L1	L2	H	S	kg
V2290.B600	3/8"	Ø9	40	350	1:4.5	VBCD/FL DE 3/8"	150	248	110	60	30	2,01
V2290.B800	1/2"	Ø9	60	350	1:4.5	VBCD/FL DE 1/2"	150	248	110	60	30	1,98

Standard indstilling - *Standard setting* : 320 bar

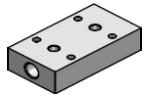
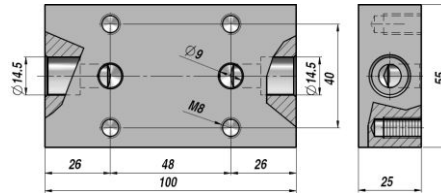
Minimum indstilling - *Minimum setting* : 200 bar

FLANGE MONTERING

FACE MOUNTING

MATERIALE - MATERIAL : STÅL - STEEL

Flange for VBCD...FL/DE - Sub-plate for VBCD...FL/DE



CODE	TYPE
V9990.8500	B8500 - 100x55x25

MATERIALE - MATERIAL : STÅL - STEEL