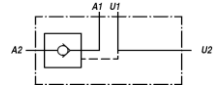
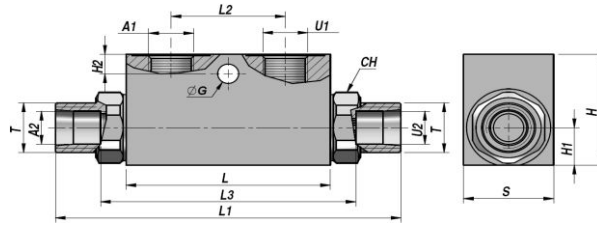
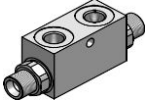


VENTILER - MOTION CONTROL VALVES

**VRSE-AZ...FF**

ENKELT VIRKENDE  
SINGLE ACTING

PILOT STYRET KONTRA VENTIL DIN 2353  
PILOT OPERATED CHECK VALVE DIN 2353 ( POPPET TYPE )



Varenr. Code	A1-U1 BSP	A2-U2	T	Q MAX l/min	P MAX bar	PILOT RATIO	Type	L max	L1	L2	L3	ØG	H2	CH	H1	H	S	kg
VSG321.F05454	1/4"	Ø10	M16x1,5	20	350	1:4.5	VRSE-AZ 005 FF	68	115	38	86	7	7	24	13	40	30	0.59
VSG321.F10454	1/4"	Ø12	M18x1,5	30	350	1:4.5	VRSE-AZ 010 FF	68	115	38	86	7	7	24	13	40	30	0.62
VSG321.F14454	3/8"	Ø10	M16x1,5	20	350	1:4.5	VRSE-AZ 014 FF	68	115	38	86	7	7	24	13	40	30	0.58
VSG321.F15454	3/8"	Ø12	M18x1,5	30	350	1:4.5	VRSE-AZ 015 FF	68	115	38	86	7	7	24	13	40	30	0.61
VSG321.F20404	3/8"	Ø15	M22x1,5	50	300	1:4	VRSE-AZ 020 FF	80	140	40	108	8.5	15	27	16	50	30	0.88
VSG321.F25404	1/2"	Ø15	M22x1,5	50	300	1:4	VRSE-AZ 025 FF	80	140	40	108	8.5	15	27	16	50	30	0.82
VSG321.F30404	1/2"	Ø18	M26x1,5	80	300	1:4	VRSE-AZ 030 FF	90	152	40	133	8.5	15	30	20	60	40	1.54

Åbningstryk - Opening pressure : bar 0,5 - 4(Standard) - 8

UDEN OMLØBER OG SKÆRERING - WITHOUT NUT AND CUTTING RING

CYLINDER MONTERING

CYLINDER MOUNTING

MATERIALE - MATERIAL : STÅL - STEEL