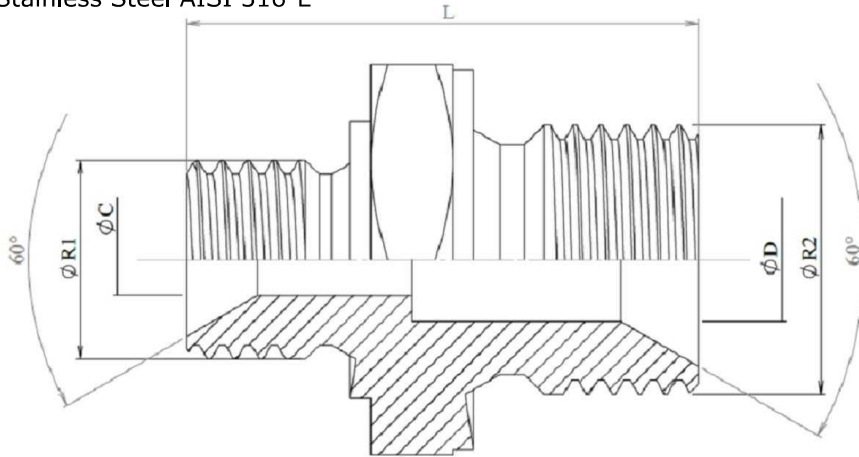


BSP Adaptors  
Straight male adaptors

## Reducer male adaptor BSP 60° - male BSP 60°

Stainless Steel AISI 316-L



Part n°	R1	R2	L	HEX 1	ØC	ØD
<b>XR3010402</b>	1/8" BSP	1/4" BSP	27	17	3,5	6
<b>XR3010402H19</b>	1/8" BSP	1/4" BSP	27	19	3,5	6
<b>XR3010602</b>	1/8" BSP	3/8" BSP	30	22	3,5	8
<b>XR3010604</b>	1/4" BSP	3/8" BSP	22	22	6	8
<b>XR3010806</b>	1/4" BSP	1/2" BSP	38	27	6	11
<b>XR3011204</b>	1/4" BSP	3/4" BSP	39,5	32	6	16
<b>XR3010806</b>	3/8" BSP	1/2" BSP	39	27	8	11
<b>XR3011206</b>	3/8" BSP	3/4" BSP	40,5	32	8	16
<b>XR3011208</b>	1/2" BSP	3/4" BSP	44	32	11	16
<b>XR3011608</b>	1/2" BSP	1" BSP	49	41	11	22
<b>XR3011008</b>	5/8" BSP	1/2" BSP	44	30	14	11
<b>XR3011210</b>	5/8" BSP	3/4" BSP	45	32	14	16
<b>XR3011612</b>	3/4" BSP	1" BSP	50	41	16	22
<b>XR3012012</b>	3/4" BSP	1"1/4" BSP	53,5	50	16	28,5
<b>XR3012016</b>	1" BSP	1"1/4" BSP	56,5	50	22	28,5
<b>XR3012416</b>	1" BSP	1"1/2" BSP	59,5	55	22	33
<b>XR3012420</b>	1"1/4" BSP	1"1/2" BSP	59	55	26	32
<b>XR3013220</b>	1"1/4" BSP	2" BSP	64	65	28	46
<b>XR3013224</b>	1"1/2" BSP	2" BSP	68	65	33	46
<b>XR3013224H70</b>	1"1/2" BSP	2" BSP	68	70	33	46